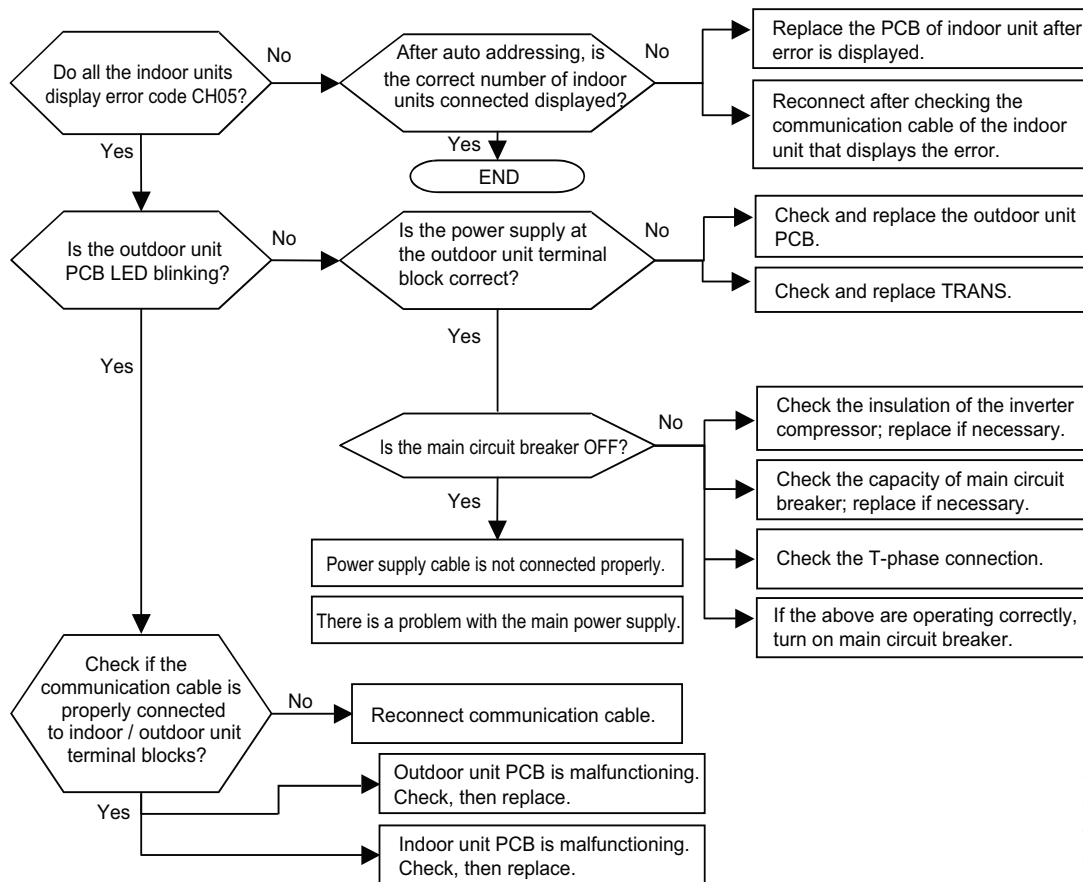


# ERROR CODES

## Error No. 05

**WARNING** Please refer to the Safety Precautions on pages 4-7 for more detail to prevent injury or death regarding the operation and service troubleshooting of the Multi V product.

Error No.	Description	Details	Causes
05	Communication error between outdoor unit PCB and indoor unit PCB.	Indoor unit PCB is not receiving communications signal from outdoor unit PCB for more than 5 minutes. Check indoor unit PCB for issues.	<ol style="list-style-type: none"> <li>1. Auto addressing has not been performed properly.</li> <li>2. Communication cable is not connected.</li> <li>3. Communication cable is short circuiting.</li> <li>4. Indoor unit communication circuit error.</li> <li>5. Outdoor unit communication circuit error.</li> <li>6. Not enough physical distance between power wiring and communication cables.</li> <li>7. T-phase line disconnection.</li> </ol>



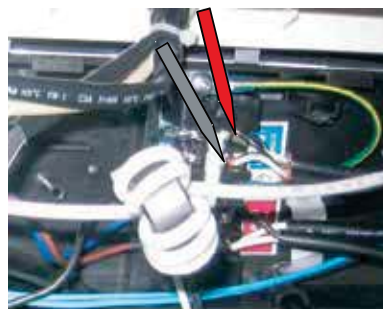
**Note:**

Images here are representative of system components. Actual component appearance depends on model and system type.

Communication from the indoor unit is normal if voltage fluctuation (-9V ~ +9V) exists (when checking DC voltage of the communication terminal between the indoor and outdoor units).



If the DC voltage between communication terminal A, B of indoor unit fluctuates within -9V ~ +9V, then the communication from the outdoor unit is normal.



**Note:**

See also Error Code No. 237: RS-485 Communication Error Between Indoor Unit and Outdoor Unit, and Error Code No. 238: Outdoor Unit PCB Communication Error Between Indoor Unit and Outdoor Unit.