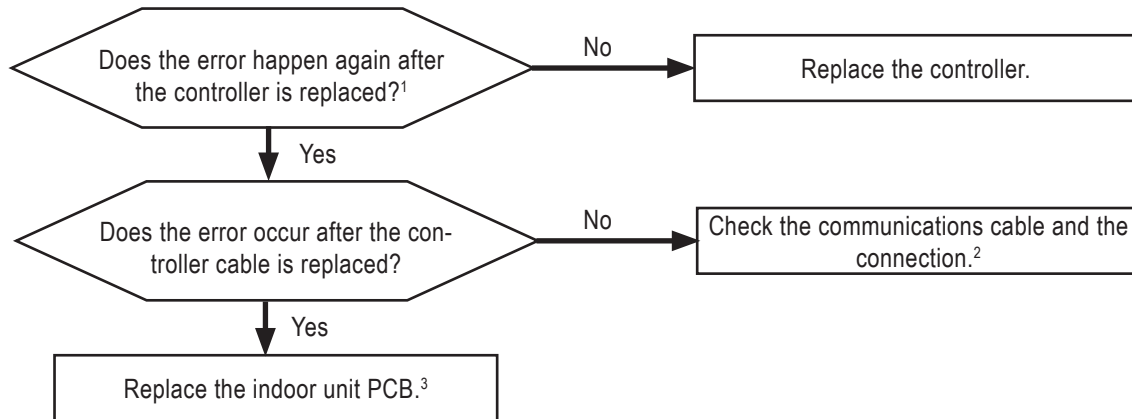


⚠ WARNING Please refer to the Safety Precautions on pages 4-7 for more detail to prevent injury or death regarding the operation and service troubleshooting of the Multi V product.

Error No.	Description	Details	Causes
03	Communication error between zone controller and indoor unit	Indoor unit PCB has not received communications signal from zone controller.	<ol style="list-style-type: none"> 1. Zone controller error. 2. Indoor unit PCB error. 3. Connection error or connection wrong. 4. Transmission cable error.



¹If there isn't a controller to replace, use an operating controller from another indoor unit.

²Plug the controller directly into the indoor unit PCB. If the error code does not come back after several minutes, the cable needs to be replaced. Check the cable because the connection could be in error. Check for cable extensions. Check distances between the communication cable and main electrical wiring. Ensure that the cable and wiring are at safe distances from one another to avoid being affected by electromagnetic waves.

³After replacing the indoor unit PCB, perform the auto addressing procedure, and input unit address if system includes a controller. (All connected indoor units must be turned ON before initiating the auto addressing procedure.)



CN-REMO: Remote controller connection

* The PCB can differ from model to model.

Note:

Images here are representative of system components. Actual component appearance depends on model and system type.



Checking communication cable connection