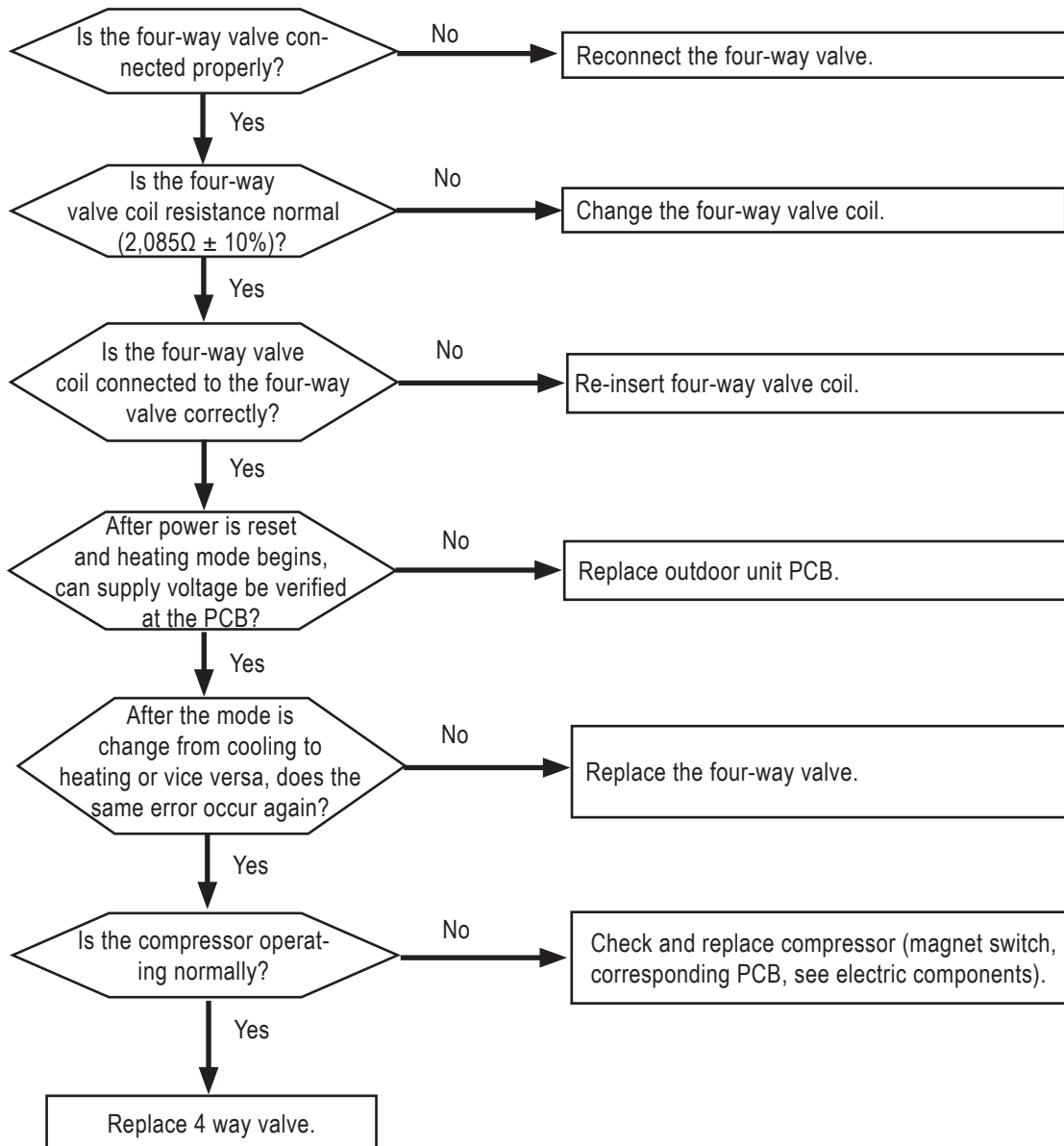


WARNING Please refer to the Safety Precautions on pages 4-7 for more detail to prevent injury or death regarding the operation and service troubleshooting of the Multi V product.

Error No.	Description	Details	Causes
151	The difference between the high and low pressure is too low.	Not enough pressure difference between high and low. Function error of outdoor unit four-way reversing valve.	<ol style="list-style-type: none"> 1. Problem with four-way valve operation because of sludge, inflow, etc. 2. No pressure difference because of compressor error. 3. Incorrect installation of outdoor unit to indoor unit piping. 4. Defective four-way valve (resistance is not $2,085\Omega \pm 10\%$).



Note:

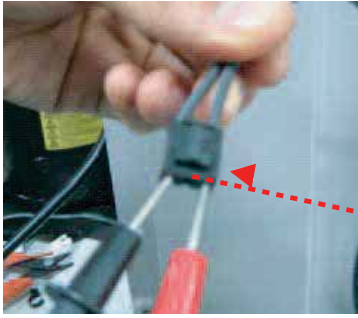
To get the valve to switch, close the outdoor unit hot gas service valve, then put the system in heat mode, and if pressure builds, slowly open the hot gas valve.

ERROR CODES

Error No. 151, continued.

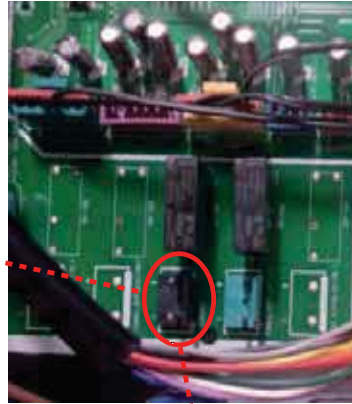
⚠ WARNING Please refer to the Safety Precautions on pages 4-7 for more detail to prevent injury or death regarding the operation and service troubleshooting of the Multi V product.

Measure the four-way valve resistance.



Location of the four-way valve connector on the Main PCB (marked as "4way, CN09").

ARUN24~53GSS4 Main PCB



ARUN / ARUB60GSS4 Main PCB



Confirm the four-way valve coil is completely inserted.



Check the output voltage of the terminal socket during heating operation (output must be 230 V AC).



MULTI V S Outdoor Unit Service Manual